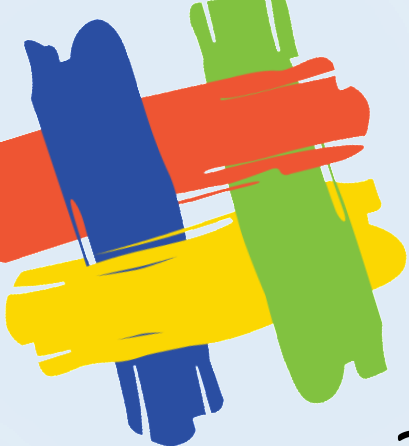


Social accountability is

participatory

M&E

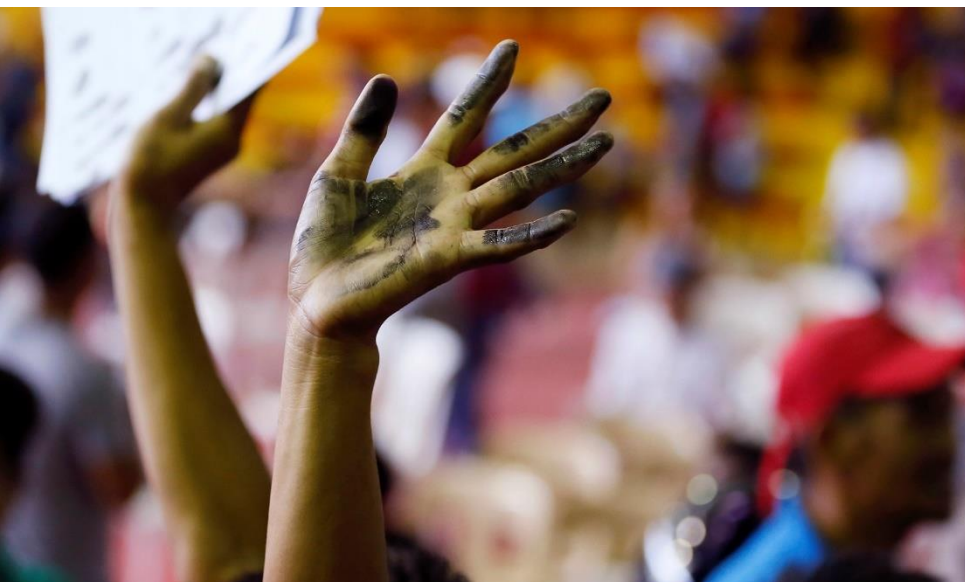


OUR VISION

Empowered people
advancing transparent,
accountable and
participatory governance

OUR MISSION

Facilitate networking
and learning among
social accountability
stakeholders



Selected initiatives in the Philippines



kids-in-CHARGE





How does M&E become participatory?



What's the value added of participatory M&E?



How does participatory M&E differ from conventional M&E?



How does participatory M&E really work?



Does participatory M&E replace conventional M&E?



Etc.



We noticed the lack of ramp handrails and signages for the storied buildings. We got more concerned when we learned that the school has a student in wheelchair.

[READ MORE >](#)

During the distribution of personal hygiene kit to the pupils, OIC Gamos told us to come up with the same activity to be sponsored by GROUP Foundation.

[READ MORE >](#)

The building had languished incomplete since contractors abandoned it mid-construction over a funding dispute.

[READ MORE >](#)

CMS Initiative

CheckMySchool is a participatory monitoring initiative for the education sector in the Philippines. It aims to continuously improve the quality of education services by bringing the participation of citizens and communities into the governance of [public schools in the country](#). It started in 2011 as an experimental partnership project with the Department of Education along the advocacy for access to information and social accountability.

[Learn More](#)[Special Projects](#)[Donate Now](#)

Issue-driven process



Identify issue



Engage people



Access data



Feedback



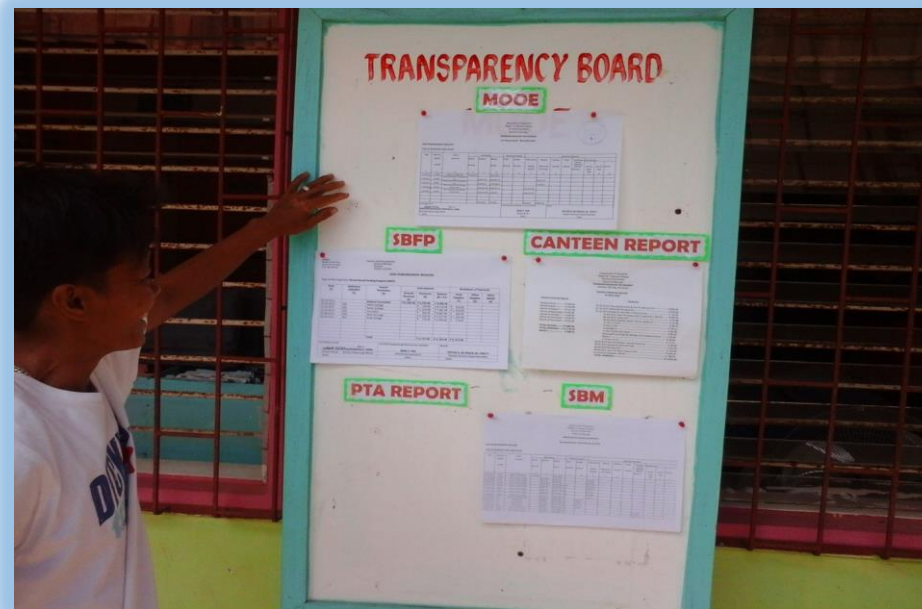
Tell story



Resolve issue



Community stakeholders conduct M&E themselves





DepEd Rizal acts on land titling problem

Brings out what people value about services



My classmate has HIV

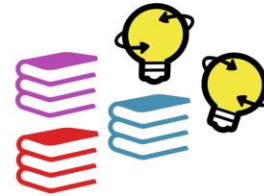
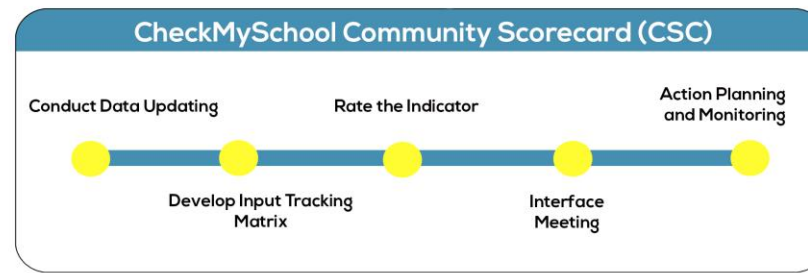


Kids' quarrel nearly incites Muslim-Christian conflict



Local govt addresses malnutrition in remote public school

Tool adjusts to/grounds data analysis in people's perspective



CONDUCT DATA UPDATING

Volunteers review relevant policies or information and prepare a matrix for Inputs, Standards and Indicators (ISI). The matrix serves as baseline information and reference for them.



DEVELOP INPUT TRACKING MATRIX

The school stakeholders are divided into two groups: Beneficiaries and Service Providers. Each group is asked to prioritize three inputs and to identify standards and indicators per input.

*Beneficiaries:
Students, Parents, PTAs,
Teachers (case to case basis)*



*Service Providers: Teachers,
Principals, School Personnel, Private
Contractors, LGUs, Gov't Agencies*

RATE THE INDICATOR



ACCEPTABLE LOW ALARMING CRITICAL

Each group rates each indicator and explain their rating with concrete details.

INTERFACE MEETING

Beneficiaries and Service Providers present their respective ISI matrices with their ratings and reasons. They discuss and, if possible, reconcile gaps and issues. Ratings may change based on discussion.



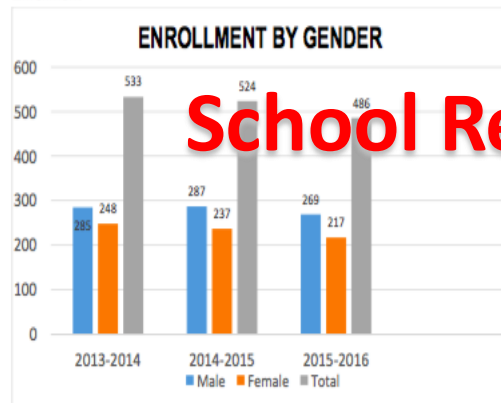
ACTION PLANNING AND MONITORING

After the respective assessment, the participants formulate recommendations and an action plan. The action plan is set for and will be monitored within 100 days.

Complements existing M&E mechanisms

School Profile

1. Enrollment



School Report Card

The graph shows the enrolment data of the school for the past three (3) years. From 2013, both male and female enrollees have decreased. The enrolment is decreasing maybe due to transfer to nearby schools or in the private schools.



CheckMySchool

Transparency Board

Key messages

Let's put people at the center of M&E.

M&E is about people's lives, not just data and reports.

Change in people's lives is best told in a stories.



It works
for us!

Thank you!